



Digital Medical Scope
VersaCam™



THE ART OF EYE CARE



Digital Solution for Viewing, Showing, and Recording Various Clinical Images

The VersaCam™ provides the digital documentation of clinical images that a physician examines.



Wide Range of Interchangeable Lenses

Interchangeable lens adapters allows the use in various medical applications such as an ophthalmoscope, anterior eye segment scope, otoscope, and dermatoscope.

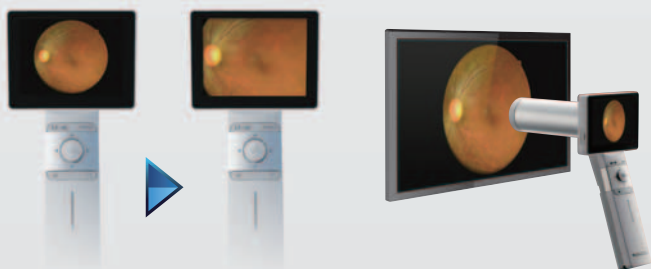


Improved Informed Consent



Captured images can be displayed directly on the 3.5-inch color LCD monitor with a 2x magnification or on the sub monitor*, which facilitates easier patient education and informed consent.

* AV output of VersaCam™ conforms with NTSC format.



2x magnification

Real time display on sub monitor

Easy and Quick Image Filing

Captured images can be imported to image filing software. As one of which, NAVIS-EX is available. About 80,000 images can be saved on a micro SD memory card.



Versatile Digital Medical Scope

Examination Room



Hospital Ward



Home Medical Care



Newborn Nursery

High Adaptability

This handheld medical scope achieves ease of use for image capture of a patient who is seated or in the supine position. This unit is also attachable to a slit lamp.



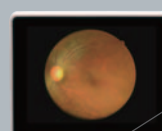
Excellent Portability

The VersaCam™ is easily portable, weighing only 400 g including the ophthalmoscope adapter. A lithium-ion battery provides up to 3 hours of continuous operation.



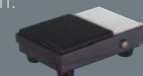
Easy One-handed Operation

The user friendly design enables the easy one-handed operation.



The still image mode and video mode can be switched.

An image can be captured by pressing the button or foot switch.



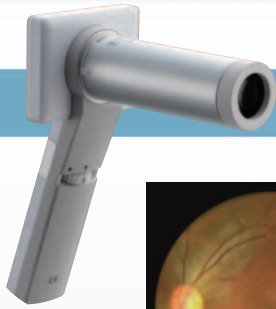
The focus can be adjusted with the dial to quickly capture images at various ranges even on the retina or tympanic membrane.

High Quality Digital Imaging

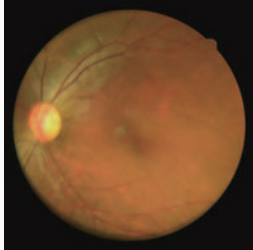
The clear-color camera with 40° angle of view achieves high quality digital imaging.



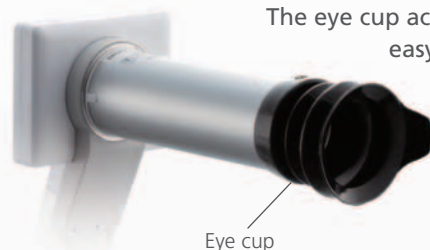
Various Lens Adapters



Ophthalmoscope



Clear-color digital images with 40° angle of view can be captured and saved.



Eye cup

The eye cup accessory enables easy setting of image capture distance and position.

Peripheral Devices (optional)



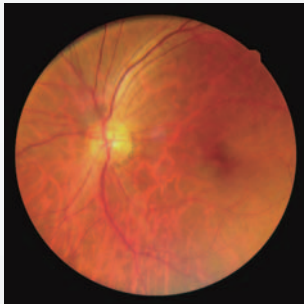
Slit lamp adapter



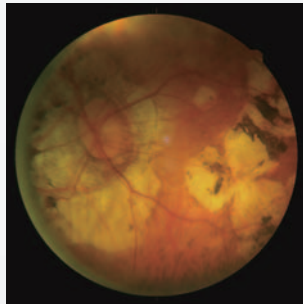
Foot switch

The slit lamp adapter is useful to attach the unit to the slit lamp, which allows easier operation. Using the adapter with the foot switch minimizes blurring of images due to hand movement.

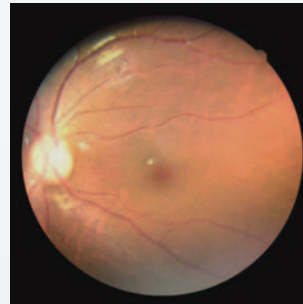
Clinical Images



Normal eye



Geographic atrophy

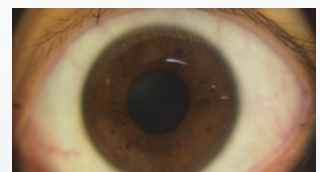
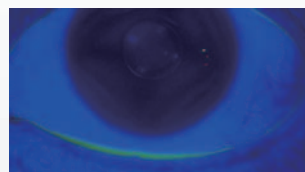


Neonatal eye



Anterior Eye Segment Scope

With this adapter, the flash color can be switched from white to blue which is useful to evaluate fluorescein staining.

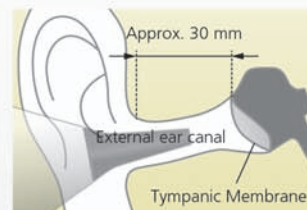
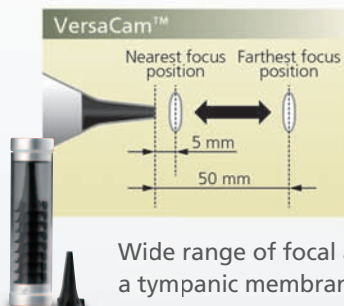




Otoscope



This adapter allows imaging of the ear canal and tympanic membrane with a wide angle of view.



Wide range of focal adjustment supports imaging a tympanic membrane distant from the lens.



Dermatoscope

Polarization is a property of light that oscillates in all directions. Filtering the light reflected from surface with the polarized light (PL) filter is helpful for inner skin evaluation.

An image of pigmented lesion such as skin disorders and moles can be captured with this adapter. With the PL filter, pigment distribution on the inner skin can be observed.



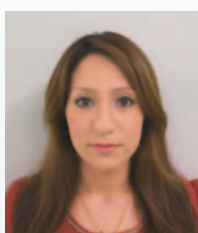
Without PL filter



With PL filter



General Lens



This adapter can be operated easily similar to a general camera and used for clinical images of the throat, skin and other tissues. The LED flash is helpful for capturing images in dimly lit environments.



Endoscope Adaptor

With this adapter, an endoscope*1*2 can be attached to the VersaCam™.

*1 NIDEK does not offer endoscopes.

*2 Please contact a NIDEK distributor to confirm if the endoscopes can be attached to this adapter.



VersaCam™ DS-10 Specifications

Main body

Camera Resolution	1,920 x 1,080 pixels
File format	JPEG (still image), H.264 (video)
Memory	8GB micro SD card
Display	3.5-inch color LCD
Interface	Mini USB, AV output (phone jack, NTSC)
Power supply	Lithium-ion rechargeable battery AC 100 to 240 V 50 / 60 Hz
Dimensions / Mass	89 (W) x 44 (D) x 205 (H) mm / 254 g 3.5 (W) x 1.7 (D) x 8.1 (H)" / 0.56 lbs.

Charging station

Interface	Mini USB
Dimensions / Mass	49 (W) x 156 (D) x 83 (H) mm / 333 g 1.9 (W) x 6.1 (D) x 3.3 (H)" / 0.73 lbs.

Lens adapter (optional)

Ophthalmoscope	
Type	Non-mydratric
Angle of view	40°
Dioptric compensation for patient's eyes	-20 to +20 D
Light source	Infrared LED (observation), White LED (observation and capturing)
Dimensions / Mass	135 (L) x 44 (Dia.) mm / 140 g 5.3 (L) x 1.7 (Dia.)" / 0.31 lbs.
Anterior Eye Segment Scope	
Angle of view	41° (diagonal)
Light source	White LED, Blue LED
Dimensions / Mass	45.2 (L) x 44.5 (Dia.) mm / 85 g 1.8 (L) x 1.7 (Dia.)" / 0.19 lbs.
Otoscope	
Focusing range	5 to 50 mm
Light source	White LED
Dimensions / Mass	69 (L) x 44 (Dia.) mm / 68 g 2.7 (L) x 1.7 (Dia.)" / 0.15 lbs.
Dermatoscope	
Image capture range	10 mm (diagonal)
Optical modes	Polarization, Non-polarization
Light source	White LED
Dimensions / Mass	56 (L) x 44 (Dia.) mm / 113 g 2.2 (L) x 1.7 (Dia.)" / 0.25 lbs.
General Lens	
Angle of view	88° (diagonal)
Light source	White LED
Dimensions / Mass	25 (L) x 44 (Dia.) mm / 49 g 1.0 (L) x 1.7 (Dia.)" / 0.11 lbs.
Endoscope adapter	
Dimensions / Mass	50 (W) x 18 (D) x 59 (H) mm / 34 g 2.0 (W) x 0.7 (D) x 2.3 (H)" / 0.07 lbs.



Foot switch (optional)

Interface	Phone Jack
Dimensions / Mass	73 (W) x 102 (D) x 31 (H) mm / 265 g 2.9 (W) x 4.0 (D) x 1.2 (H)" / 0.58 lbs.



Slit lamp adapter (optional)

Dimensions / Mass	77 (W) x 132 (D) x min. 202 (H) mm / 850 g 3.0 (W) x 5.2 (D) x min. 8.0 (H)" / 1.9 lbs.
-------------------	--



Manufacturer: MedimagingIntegrated Solution Inc.

1F, No. 7, R&D Rd II, Hsinchu Science Park, Hsinchu, Taiwan 30076

EC Rep: Obelis S.A.: Bd. General Wahis 53, 1030, Brussels, Belgium

Product / Model name: Digital Medical Scope DS-10EA

Digital Medical Scope DS-10F

Digital Medical Scope DS-10A

Digital Medical Scope DS-10E

Digital Medical Scope DS-10D

Digital Medical Scope DS-10G

Caution: U.S. Federal Law restricts this device to sale, distribution, and use by or on the order of a physician or other licensed eye care practitioner.

Specifications may vary depending on circumstances in each country.

Specifications and design are subject to change without notice.



Eye & Health Care

NIDEK CO., LTD.

HEAD OFFICE (International Div.)

34-14 Maehama, Hiroishi
Gamagori, Aichi 443-0038,
Japan
TEL: +81-533-67-8895
URL: <http://www.nidek.co.jp>
[Manufacturer]

TOKYO OFFICE (International Div.)

3F Sumitomo Fudosan Hongo
Bldg., 3-22-5 Hongo, Bunkyo-ku,
Tokyo 113-0033, Japan
TEL: +81-3-5844-2641
URL: <http://www.nidek.com>

NIDEK INC.

47651 Westinghouse Drive
Fremont, CA 94539, U.S.A.
TEL: +1-510-226-5700
+1-800-223-9044
(US only)
URL: <http://usa.nidek.com>

NIDEK S.A.

Europarc
13, rue Auguste Perret
94042 Créteil, France
TEL: +33-1-49 80 97 97
URL: <http://www.nidek.fr>

NIDEK TECHNOLOGIES Srl

Via dell'Artigianato,
6 / A 35020 Albignasego
(Padova), Italy
TEL: +39 049 8629200/8626399
URL: <http://www.nidektechnologies.it>

NIDEK (SHANGHAI) CO., LTD.

Rm 915, China Venturetech
Plaza, No.819 Nanjing West Rd,
Jing An District, Shanghai
China 200041
TEL: +86 021-5212-7942
URL: <http://www.nidek-china.cn>

NIDEK SINGAPORE PTE. LTD.

51 Changi Business Park
Central 2 #06-14
The Signature Singapore
486066
TEL: +65 6588 0389

